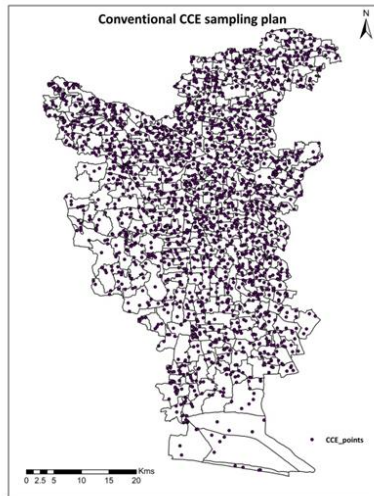


# Annexure iv

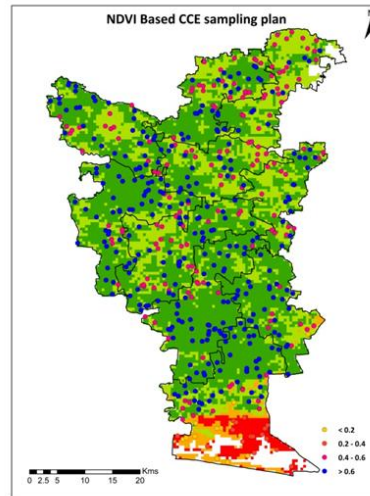
## REMOTE SENSING AND GEOGRAPHICAL INFORMATION SYSTEM

Getting approval from Government of India for TNAU Smart sampling methodology for Optimizing Crop Cutting Experiments (CCE's)

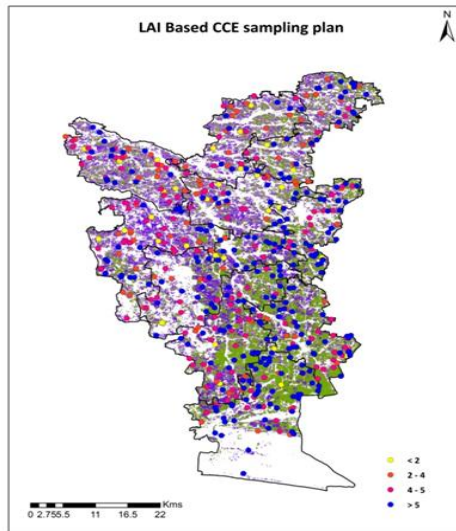
### SMART SAMPLING PLAN FOR CROP CUTTING EXPERIMENTS – TIRUVARUR DISTRICT



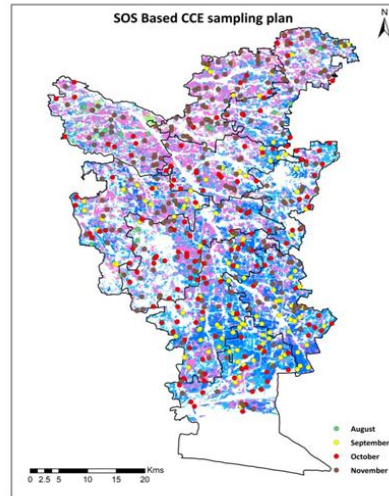
Conventional CCE @ 4  
Samples per village :  
2052 Nos.



SMART CCE based on  
NDVI: 1000 Nos.



SMART CCE based on LAI:  
1000 Nos.



SMART CCE based on SoS:  
1000 Nos.

50 % of CCEs in rice can be reduced using TNAU Smart sampling methodology

**Action taken:**

Proposal for getting approval from Government of India (MNCFC) was prepared and submitted to the Director of Agriculture for onward transmission, approval and utilization in the PMFBY crop insurance scheme